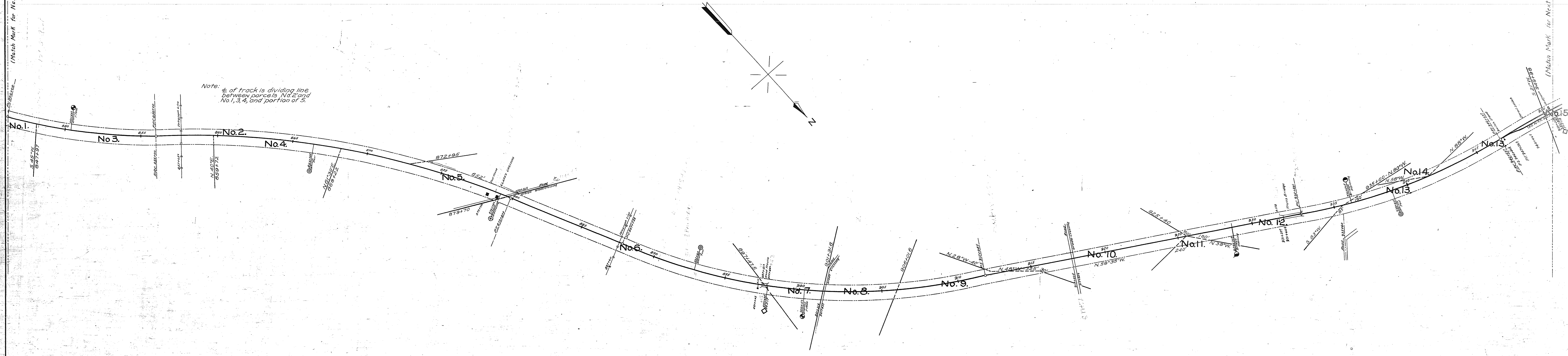


(Match Mark for Next Sheet)

(Match Mark for Next Sheet)



Note: 1/2 of track is dividing line between parcels No. 2 and No. 1, 3, 4, and portion of 5.

RIGHT-OF-WAY AND TRACK MAP  
 WASHINGTON AND OLD DOMINION RAILWAY  
 BLUEMONT DIVISION  
 Mile 16 to Mile 18  
 Station 846+00 to Station 950+43.9  
 Scale: 1 in = 200 ft. July 1, 1916.  
 Office of Chief Engineer  
 Washington D.C.

VA.

V. 37  
 V. 47  
 9