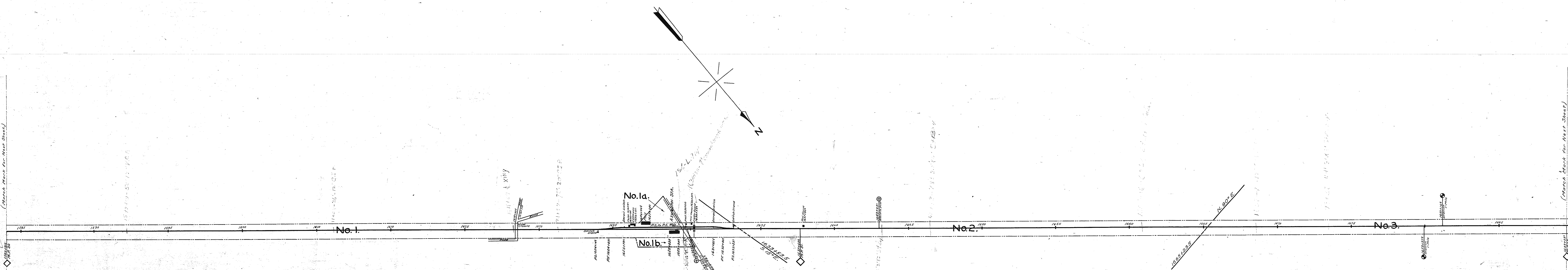


(March Mark for Next Sheet)

(March Mark for Next Sheet)



RIGHT-OF-WAY AND TRACK MAP  
 WASHINGTON AND OLD DOMINION RAILWAY  
 BLUEMONT DIVISION  
 Mile 30 to Mile 32  
 Station 1593+91 to Station 1699+52  
 Scale: 1 in. = 200 ft  
 Office of Chief Engineer  
 Washington, D.C.  
 July 1, 1915.